

Carestream

DIRECTVIEW V5 CR and DR Software

# Fast. Robust. Compatible.

A Single Software Solution for Greater Productivity.



SMART IMAGING SOLUTIONS

# The Solution is Here. A Software Platform Designed for Compatibility.

As demands on your time and budget continue to grow, you need innovative ways to speed your workflow – and derive even greater efficiency from the CARESTREAM CR, DR, and DRX systems in your facility.

CARESTREAM DIRECTVIEW V5 CR and DR Software is compatible with a wide range of Carestream imaging systems. By eliminating the need to learn and use multiple programs, DIRECTVIEW V5 CR and DR Software boosts productivity to a new level. The standard platform is benefit-rich and highly robust... while a broad range of options lets you select the mix of add-on features to meet your specific needs.

## Advantages at a Glance

- Features a common platform for consistent exposures and fewer retakes.
- Delivers high-quality diagnostic images.
- Offers a wide range of software options.
- Supports a variety of specialty applications.

## CR + DR Compatible.

DIRECTVIEW V5 CR and DR Software versions are available with new DIRECTVIEW installations and as upgrades for many legacy systems. This innovative platform is fully compatible with DRX Evolution, DRX-Mobile Retrofit Kits, DRX-1 System, DR systems and CR floor-standing units.





# Overcoming the Barriers to Faster Workflow.

There are many challenges that impede radiography workflow. For example, the time it takes to train technologists on multiple software platforms. There are inevitable delays and disrupted workflow as your technologists stop to switch systems or learn new system interfaces, and these can slow exam times and contribute to the need for reshoots.

Envision all imaging systems throughout your enterprise powered by a feature-rich, single software program. This was the inspiration for DIRECTVIEW V5 Software. The result is CR/DR harmonization technology – ensuring that software features and functionality are consistent across all compatible systems. This gives your productivity level a major boost, enabling you to:

- Train technologists on one platform, and know they're ready to operate a variety of systems.
- Benefit from greater staff versatility – technologists can switch from one system to another quickly and efficiently.
- Depend on an intuitive, easy-to-use touch-screen interface.
- Minimize repeat exams, through more consistent and uniform exam protocols.
- Resolve performance issues immediately and minimize downtime with a robust on-screen "help" feature and extensive remote-monitoring tools.
- Custom-configure the system to fit your workflow – and to your users' preferences.

## Focus on Quality

We understand that productivity gains must never compromise your high standards for patient care. Our software includes advanced image-quality control capabilities to ensure the overall excellence of the radiographic images you capture, which support accurate diagnoses and positive patient outcomes. At the same time, our image-processing technology helps reduce noise – so you can be assured of the image quality you demand.

## Security and Convenience

A reality for today's healthcare facilities is the ever-present threat of a security breach. DIRECTVIEW V5 Software incorporates protection features to help shield you from unauthorized access, theft of information, violation of confidential patient records and the potential for serious financial consequences.

We've also paid attention to the little things. For your convenience, this new software supports the use of jump drives and CD/DVD – for fast and easy image export and transport.

The simplified user interface reduces the time required to complete a procedure. And the robust on-screen help feature allows for immediate problem resolution and minimizes support time.



# Support for Specialty Applications.

DIRECTVIEW V5 CR and DR Software options can maximize quality and productivity in these specialty imaging applications:

## **Mammography**

Carestream's proprietary algorithms increase software performance for clearer identification of micro calcifications. Our Total Quality Tool for Mammography boosts the versatility of CR systems, for high performance specific to mammography or mixed-use environments.

## **Pediatrics**

Monitoring dose is particularly critical in pediatric imaging. Depend on reliable measurement and tracking with the IEC standard Exposure Index feature to ensure you are within range. Gain performance versatility as well, with imaging options for seven different pediatric body types linked to exposure techniques.

## **Long-Length Imaging**

The software features are ideal for orthopaedic applications. Image stitching is performed automatically, providing seamless images in less time – no need to manually align images. For even greater control, use the manual stitch editor when manual orientations are desired.



# Optional Features Complete the Performance Picture.

Your healthcare facility is unique – with its own particular set of imaging needs. So what combination of capabilities are you looking for? Remote data entry? Interconnectivity between multiple CR and DR systems? Support for specialty applications?

DIRECTVIEW V5 Software offers these options and many more. You select from a broad menu of capabilities – giving you a custom mix of the tools you require, with no need to pay for those you don't. So consider this diversity of options – then make DIRECTVIEW V5 Software exactly what you need it to be.



*Remote Operations Panel*



*Exam Tutor*

## Workflow Enhancement Options

Carestream products support DICOM interoperation and comply to IHE standards to address specific clinical needs and support optimal patient care.

### Remote Operations Panel

Save time and steps in your work process. With this wall-mounted panel, technologists can perform most of the functions of the main CR system without walking to the machine itself.

### IHE Scheduled Workflow

DIRECTVIEW V5 CR and DR Software saves time and boosts productivity by automatically notifying your HIS/RIS of exam status.

### DICOM Modality Worklist

Facilitates automatic transfer of patient and procedure data to your HIS/RIS system, eliminating manual data entry, and increasing technologist productivity.

### Capture Link

Integration means efficiency. Connect as many as five CR/DR systems, scan and review images on any one of them, and watch productivity spike in your high-volume areas.

### Procedure Mapping

Extra keystrokes add up to wasted time. Count on this platform's simple RIS and procedure codes to speed data entry and workflow. Exam Tutor gives technologists the flexibility to acquire images in any sequence.

### Remote Patient Data Entry

Patients are your first priority. Let radiographers dedicate more time to them, by making data entry an office-based PC task. This reduces overall radiographer workload, too.

### Advanced Trauma Capability

Work faster when every second counts. Gain immediate access to patient records and depend on predefined exam/procedure codes to speed workflow in trauma cases – and get patients to treatment faster.

### Patient CDs

Increase your patients' satisfaction. Now they can walk out the door with a CD copy of their images, including a DICOM viewer to take to their referring physician.



# Satisfaction Across the Enterprise.

**DIRECTVIEW V5 CR and DR Software offers benefits for stakeholders throughout your facility:**

- Radiologists get superior diagnostic images in less time.
- Patients receive faster diagnosis, treatment and an enhanced level of care.
- Technologists enjoy improved ease of use and convenient operation.
- IT departments receive DICOM-compliant, reliable and secure software performance.
- Administrators and department heads see greater productivity, patient satisfaction and increased ROI.

## Quality Enhancement Options

### Administrative Analysis and Reporting Option

Improve your department's overall performance by taking analysis and reporting to a new level. This easy-to-use software provides a single, consolidated source for viewing all performance metrics from your CR and DR systems in a format that works for you. DR detectors feature a shock reporting capability that provides valuable data to indicate the different shocks registered for each detector. With this "digital dashboard," you're able to analyze results and develop improvement plans.

### Total Quality Tool

Keep work flowing. Now, the same interface can be used for patient exams and objective quality-control image tests on your CR and DR systems. With the Total Quality Tool package – software, phantom and carrying case – you can perform these tests when it's convenient for you – without interrupting workflow or incurring the cost of third-party testing.

## Image Processing Options

### SmartGrid

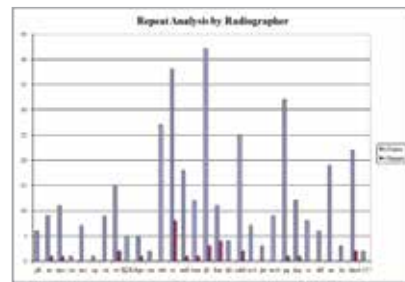
SmartGrid feature is a software option that provides, upon request by the user, a diagnostic radiograph image with a reduction in visible X-ray scatter similar to the effect of an anti-scatter grid. SmartGrid processing provides image quality comparable to images acquired with an anti-scatter grid at a reduced patient dose in bedside chest imaging. The benefits of grid-like image quality without the use of an anti-scatter grid can lead to improved workflow and ease of imaging for radiographers.

### Tube and Line Visualization

Be sure with a single exposure. With this feature, a companion image is created from the original exposure with optimized processing for clearer, easier visualization of PICC lines and tubes. It increases confidence that tubes and lines are placed correctly – and remain in position.

### EVP Plus

Supercharge processing productivity. EVP Plus image processing accelerates the capture set-up process and increases output quality. It provides greater efficiency and supports enhanced patient diagnosis.



Administrative Analysis



Tube and Line Visualization

### Low-Exposure Optimization

See every detail. Low-exposure optimization minimizes quantum noise interference in low-exposure imaging areas to capture the finest diagnostic details.

### Black Surround

Focus in on the issue. This black surround option masks the white collimated area to eliminate foreground flare. It defines your area of interest automatically, and allows manual selection of complex anatomical structures for rapid, accurate collimation verification.

### Grid Detection and Suppression

Get a clearer view. This option provides improved image quality through automatic detection and suppression of gridline artifacts.

NO MATTER WHICH ROAD YOU'RE ON,  
WE'LL GET YOU WHERE  
YOU NEED TO GO.

SMART IMAGING SOLUTIONS

### The Fastest Route to a Successful Imaging Future.

As you travel to the future of imaging, what's your next step? Maybe you want to move from analog to digital. Perhaps you need to accelerate your X-ray workflow. Or it could be you're ready to add new imaging modalities to your facility to provide better patient care. Wherever you're headed, we have the smart solutions you need: Full-digital imaging suites and leading-edge mobile units. Affordable CR systems. Wireless, sharable detectors and CR-to-DR retrofit kits. As well as additional modalities such as Cone-beam CT, Ultrasound and Fluoroscopy.

### Start Mapping Your Route Today.

Visit [carestream.com](http://carestream.com) to start your journey.

Carestream also offers benchmark healthcare IT solutions. The gold standard in X-ray film. And, when it comes to digital output, our laser imagers and self-service kiosk provide high-quality solutions for all imaging modalities.

### A Community of Service and Support.

For dependable service, look to our Customer Success Network. We work continuously to improve your imaging performance, help you to innovate as needs change, and make the most of your budget and resources. Carestream's Customer Success Network surrounds you with a dynamic team of experts, with a Single Point of Entry for easy, customized access to the right people in every situation. You and your patients will benefit from the expertise and best practices only Carestream can deliver – based on thousands of customer engagements worldwide and our 100-year heritage in medical-imaging innovation.



[carestream.com/software](http://carestream.com/software)

"Rx only"

